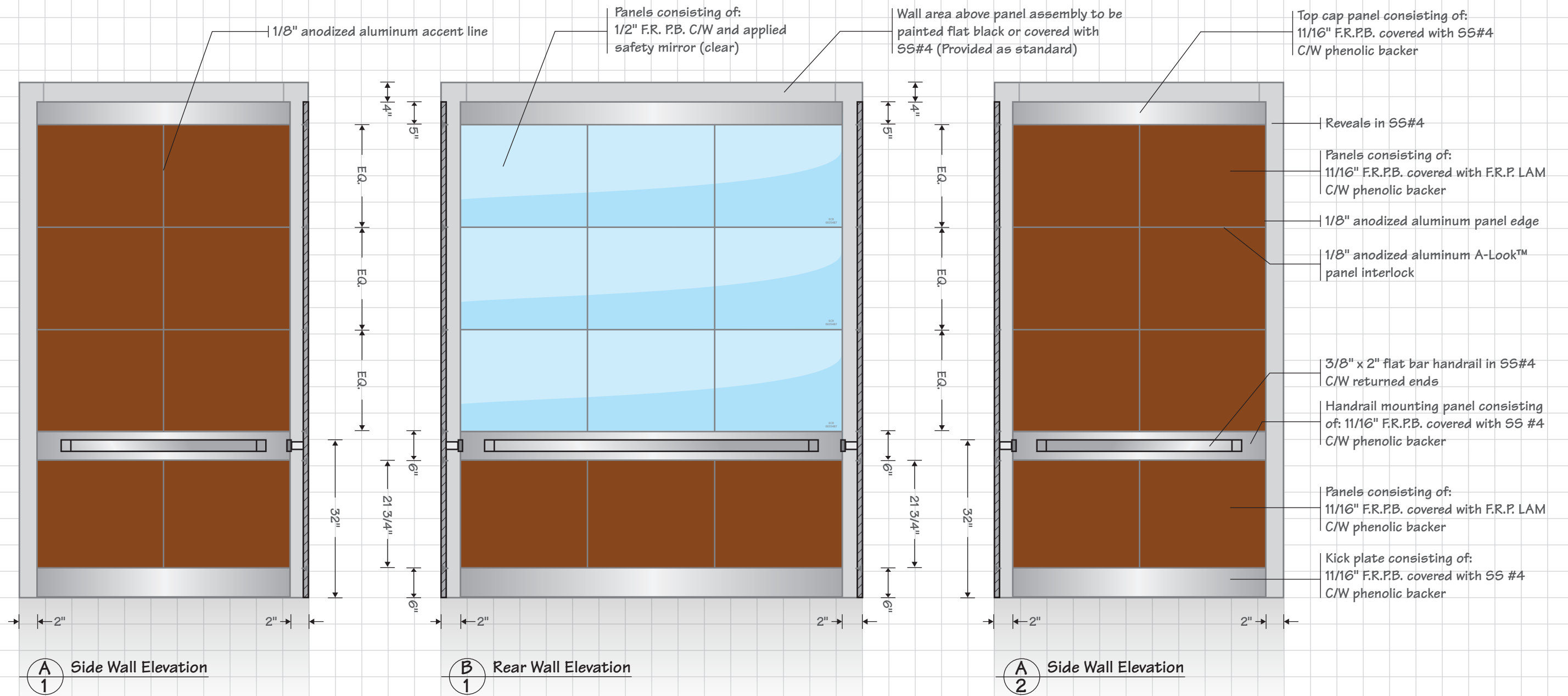


The Providence A-L





Providence A-L Feature Sheet

1. 20ga SS#4 Corner reveals
2. SS#4 Kick plate panels comprised of:
 - Phenolic backer (to prevent warping)
 - 3/4" Fire rated particleboard core
 - Covered with 20ga SS#4
3. SS#4 Handrail mounting panels comprised of:
 - Phenolic backer (to prevent warping)
 - 3/4" Fire rated particleboard core
 - Covered with 20ga SS#4
4. 1/8" Aluminum A-Look™ panel interlock (mill finish)
5. Horizontal panels comprised of:
 - Phenolic backer (to prevent warping)
 - 3/4" Fire rated particleboard core
 - 1/16" Fire rated plastic laminate by Arborite®
 - 1/8" x 1/8" Anodized aluminum (vertical) accent lines
6. Horizontal panels above the handrail on the rear wall only comprised of:
 - 1/2" Fire rated particleboard core
 - 1/4" Clear safety mirror c/w polished edges and etched markings as per B44 - Current
 - 1/8" Wide vertical accent lines (sandblasted and painted black on rear of safety mirror)
7. Panel cap (finishing top trim) comprised of:
 - Phenolic backer (to prevent warping)
 - 3/4" Fire rated particleboard core
 - Covered with 20ga SS#4
8. 1/4" x 2" SS Handrail (brushed finish) on all non-access walls C/W returned ends



Established in 1987

www.alookcabs.com

1-877-745-4870