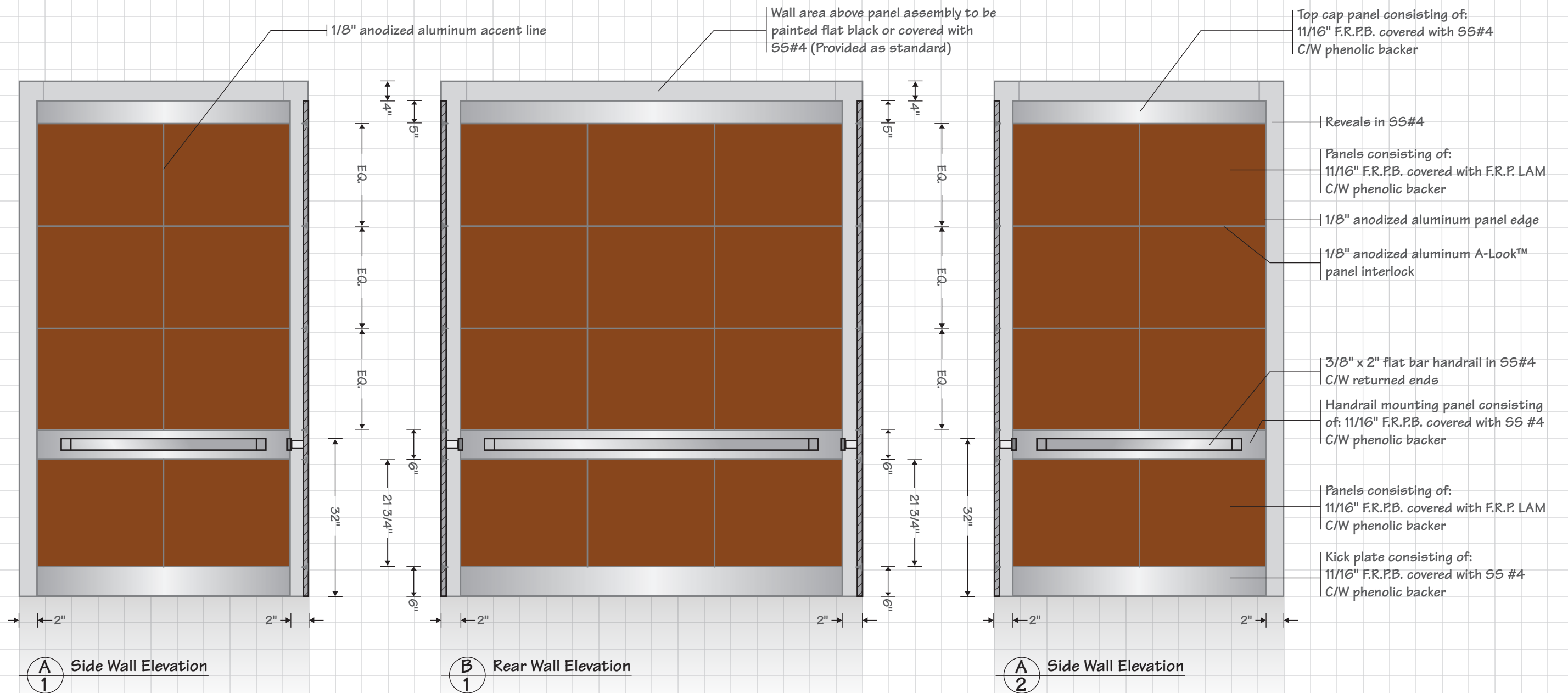


# The Ashbury A-L





## Ashbury A-L Feature Sheet

1. 20ga SS#4 Corner reveals
2. SS#4 Kick plate panels comprised of:
  - Phenolic backer (to prevent warping)
  - 3/4" Fire rated particleboard core
  - Covered with 20ga SS#4
3. SS#4 Handrail mounting panels comprised of:
  - Phenolic backer (to prevent warping)
  - 3/4" Fire rated particleboard core
  - Covered with 20ga SS#4
4. 1/8" Aluminum A-Look™ panel interlock (mill finish)
5. Horizontal panels comprised of:
  - Phenolic backer (to prevent warping)
  - 3/4" Fire rated particleboard core
  - 1/16" Fire rated plastic laminate by Arborite®
  - 1/8" x 1/8" Anodized aluminum (vertical) accent lines
6. Panel cap (finishing top trim) comprised of:
  - Phenolic backer (to prevent warping)
  - 3/4" Fire rated particleboard core
  - Covered with 20ga SS#4
7. 1/4" x 2" SS Handrail (brushed finish) on all non-access walls C/W returned ends



Established in 1987

[www.alookcabs.com](http://www.alookcabs.com)

1-877-745-4870